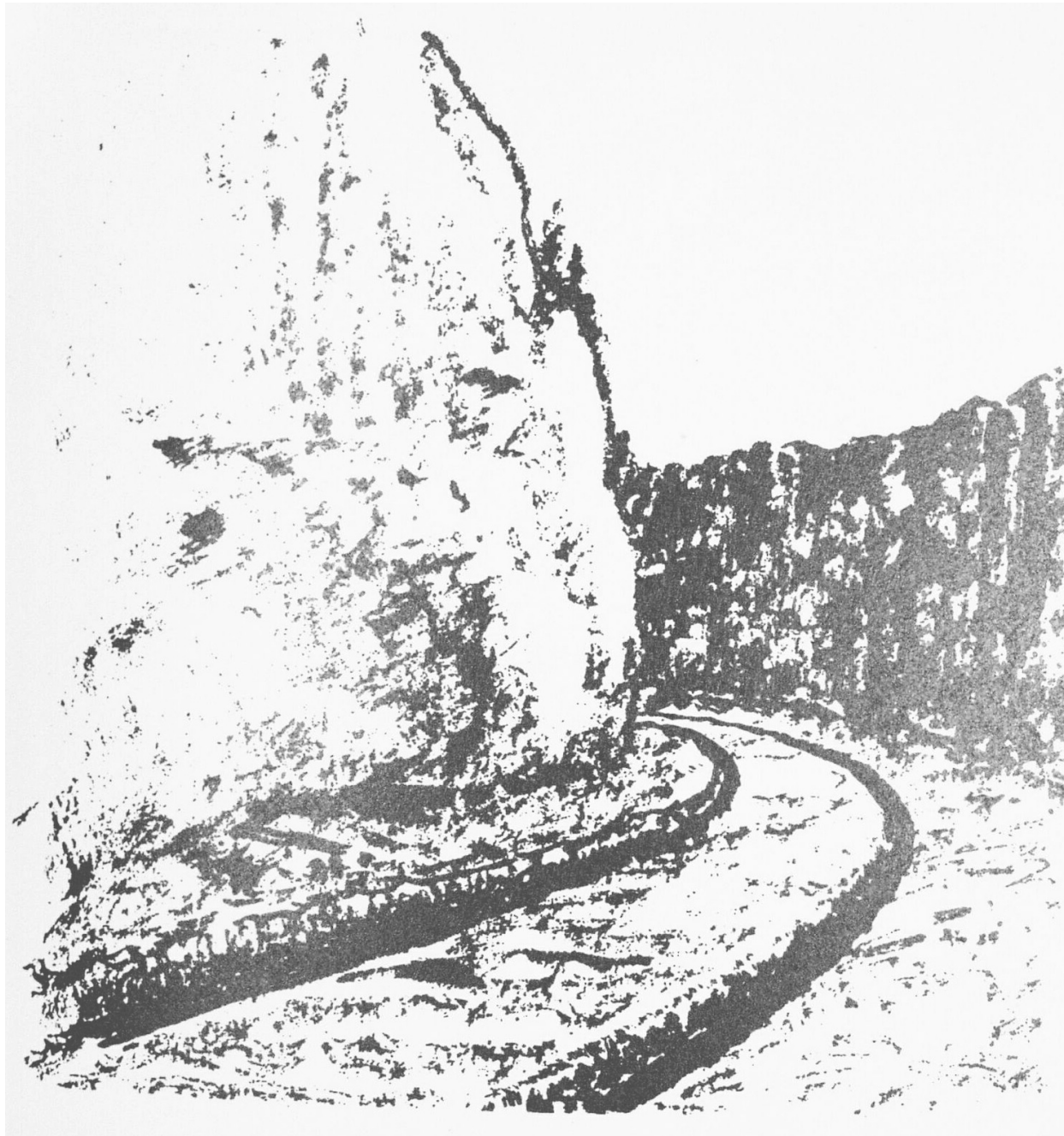


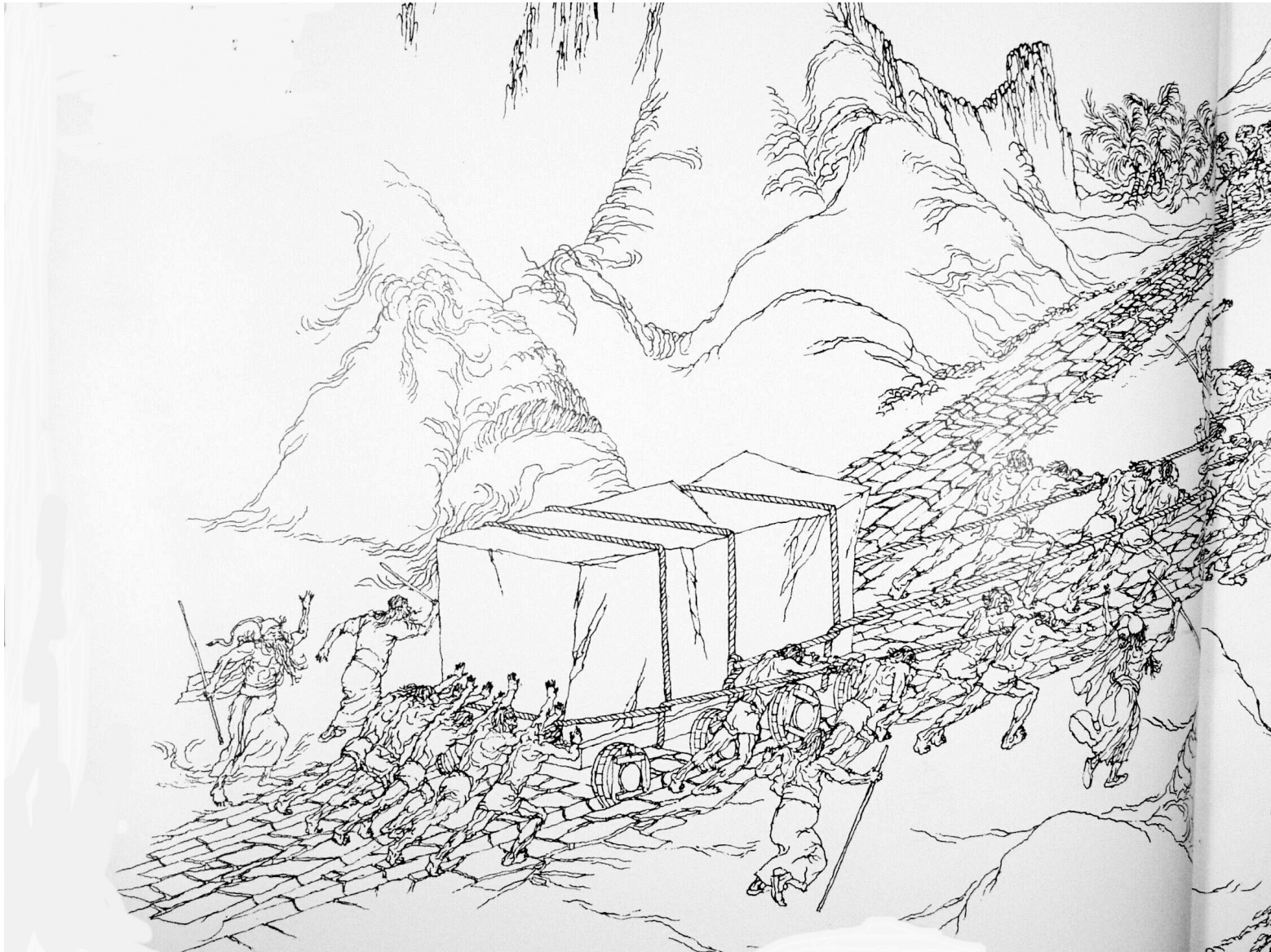
WHAT IS A TRAIN?

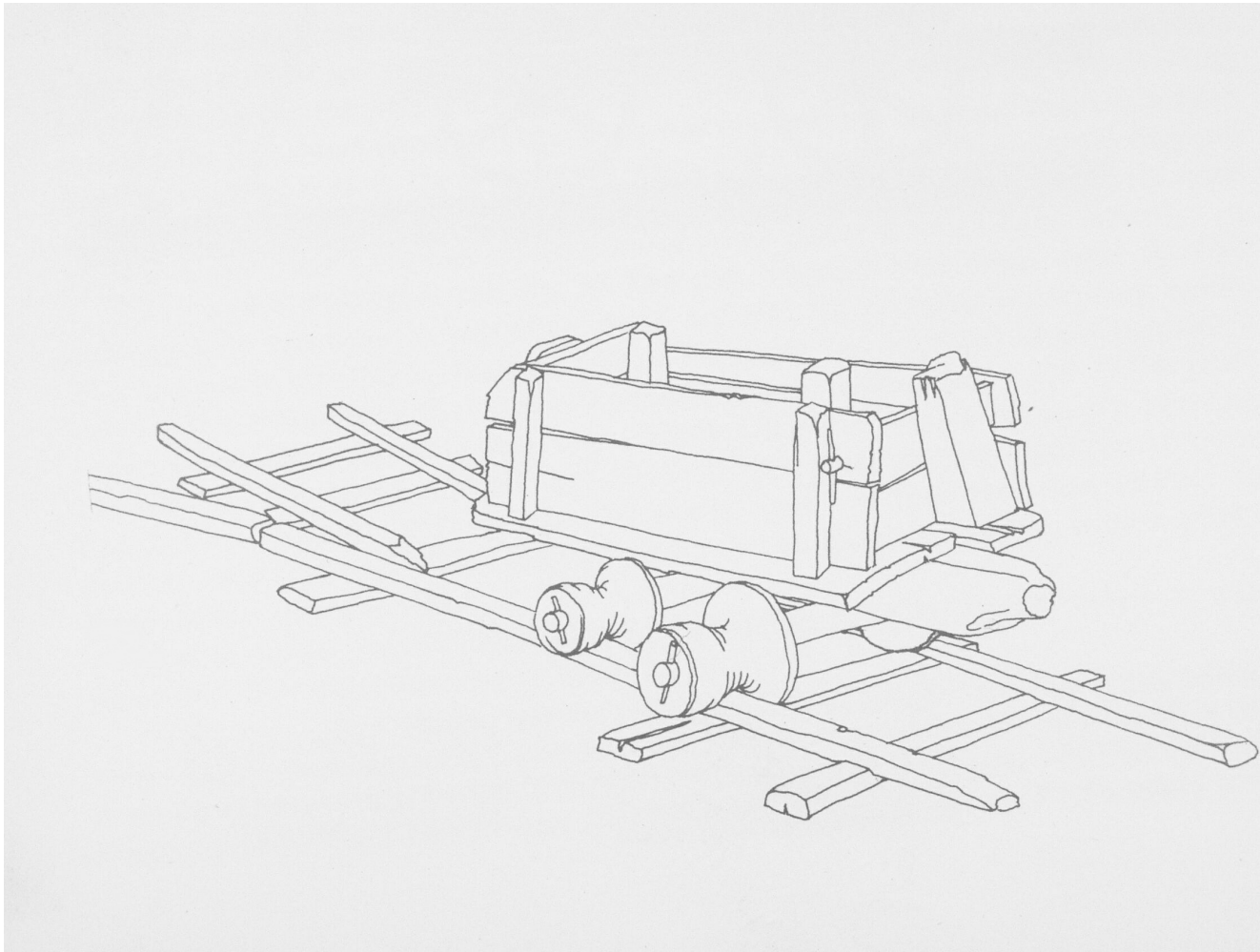
A Brief History of the
Development of Railroads



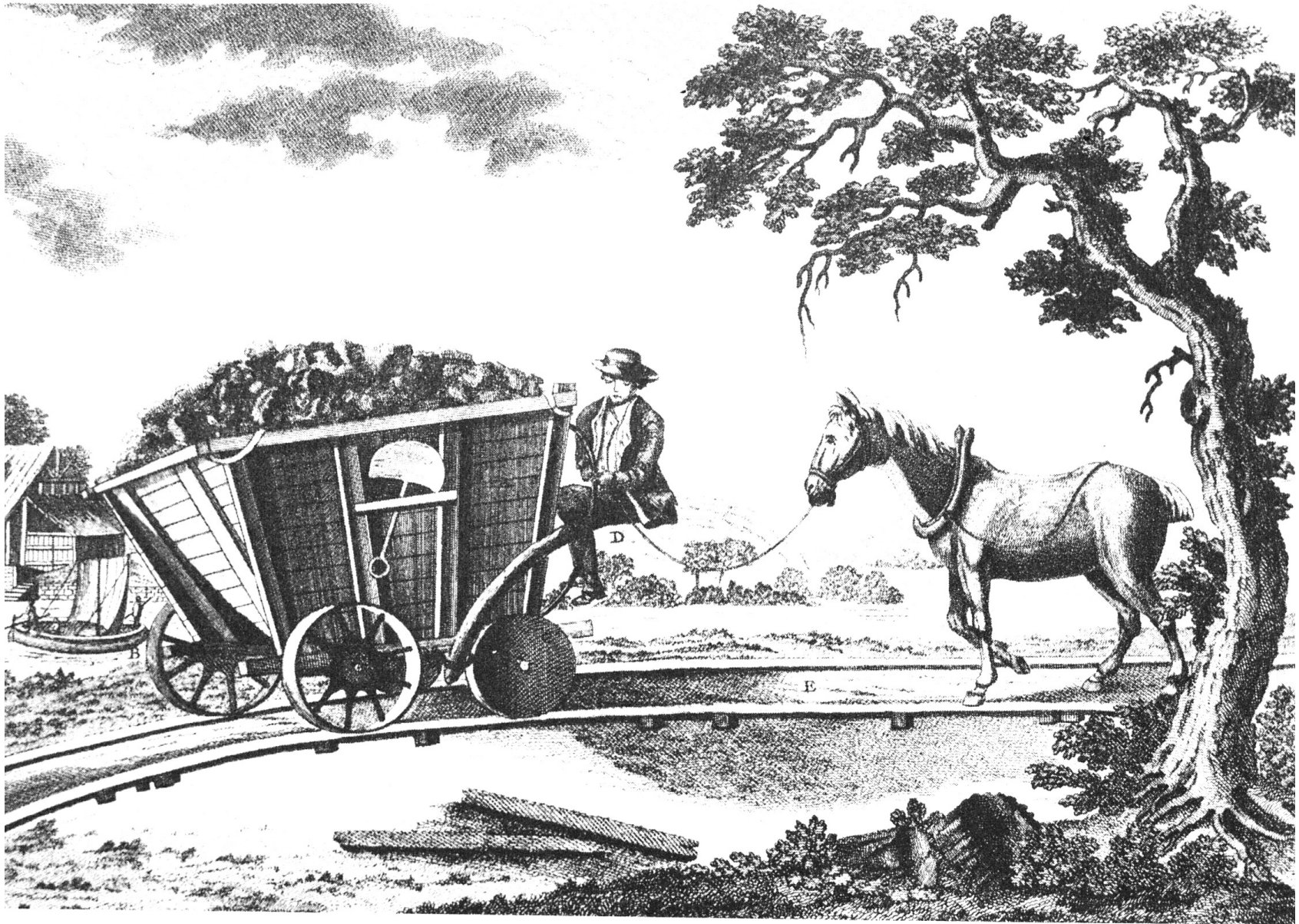
An Old
Rutted
Roman
road in
Sicily

Moving stones on rutted road

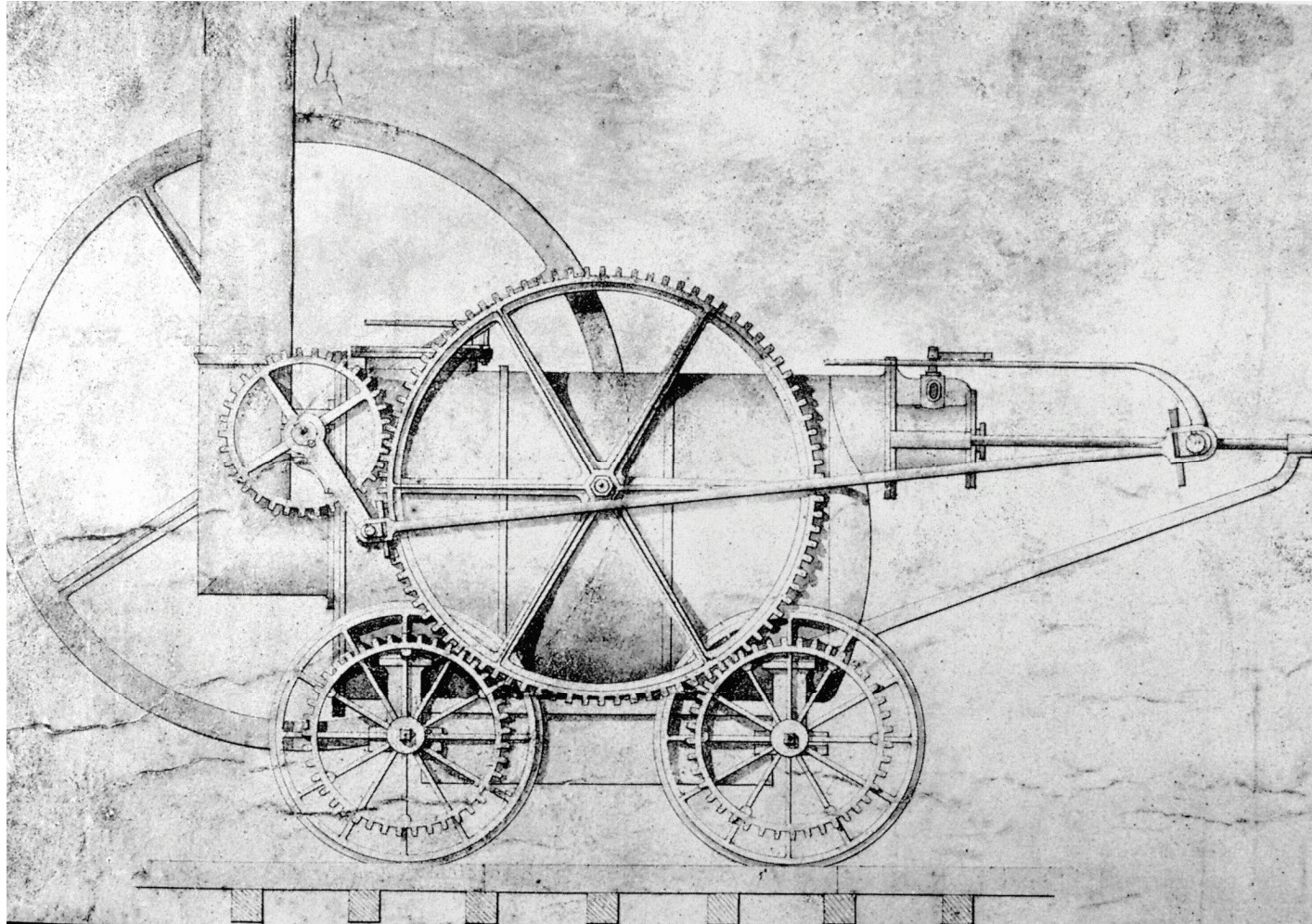




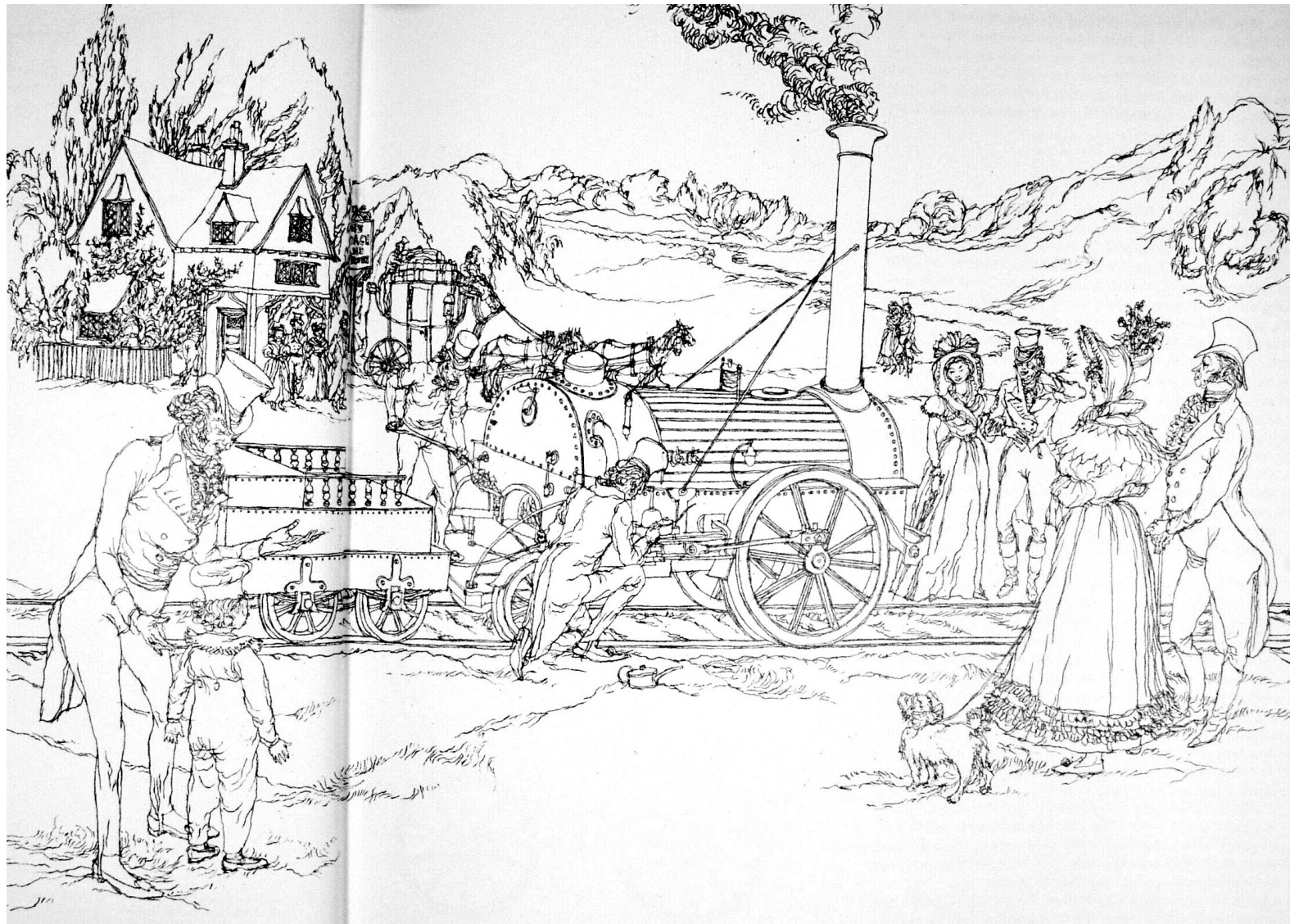
Wooden mining wagon with flanged wheels
and wooden track Europe 1500's



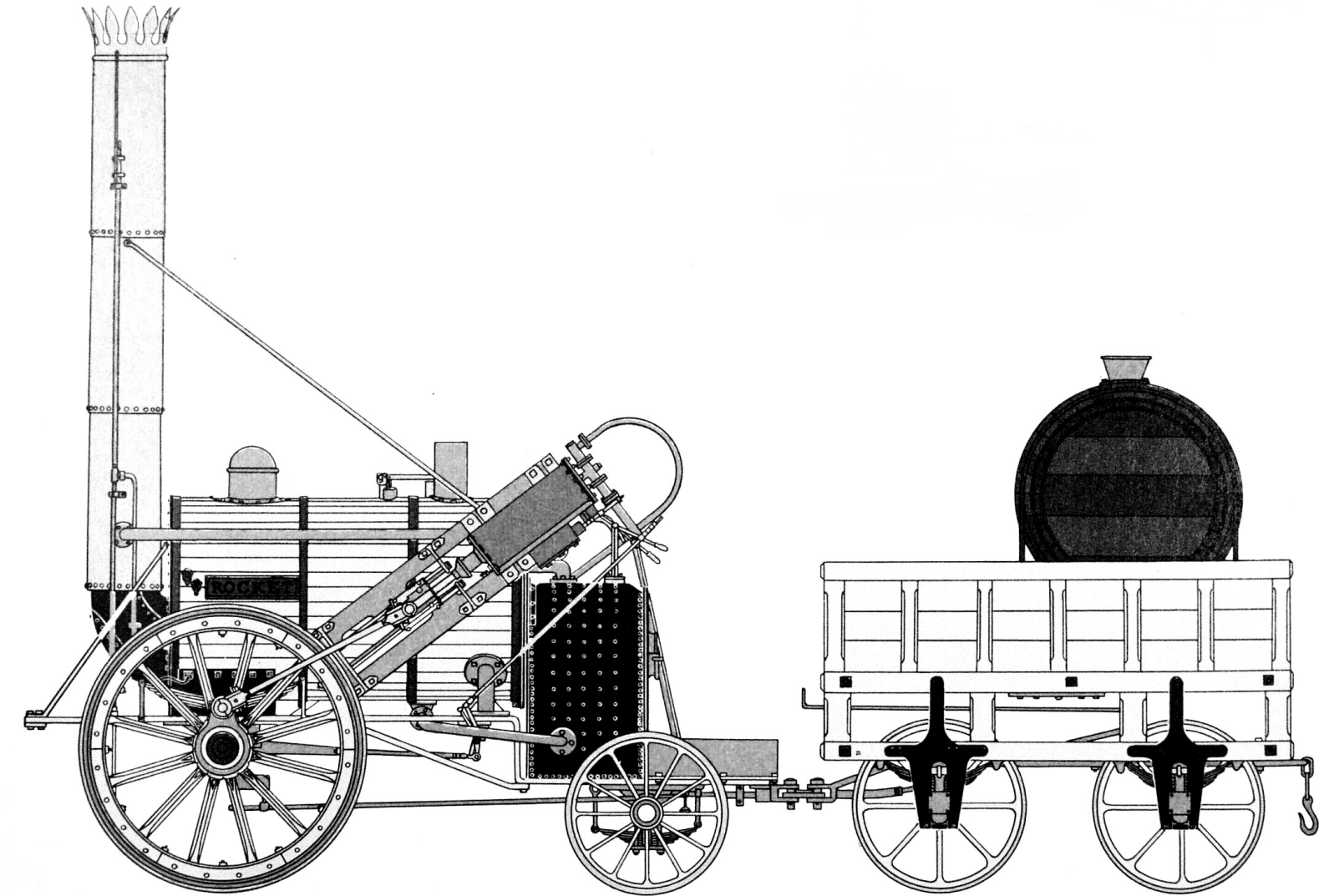
Coal wagon Newcastle, England ~1770



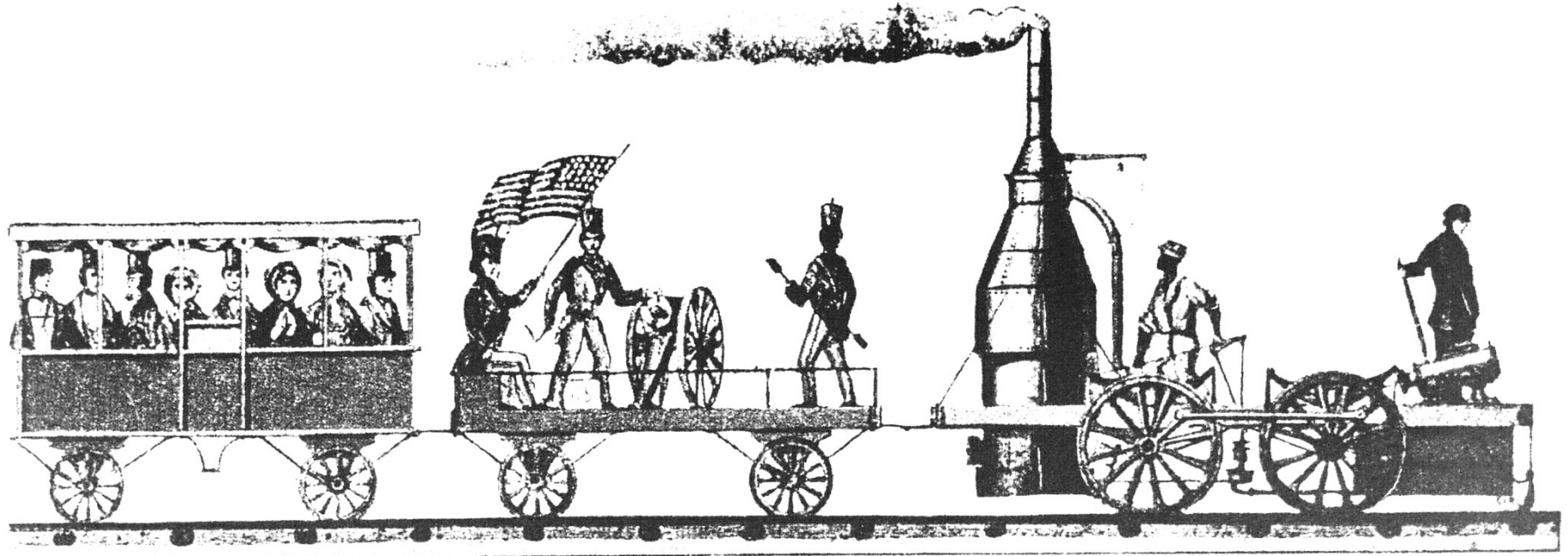
Richard Trevithick's Black Billy
The first steam locomotive - 1804 - Wales



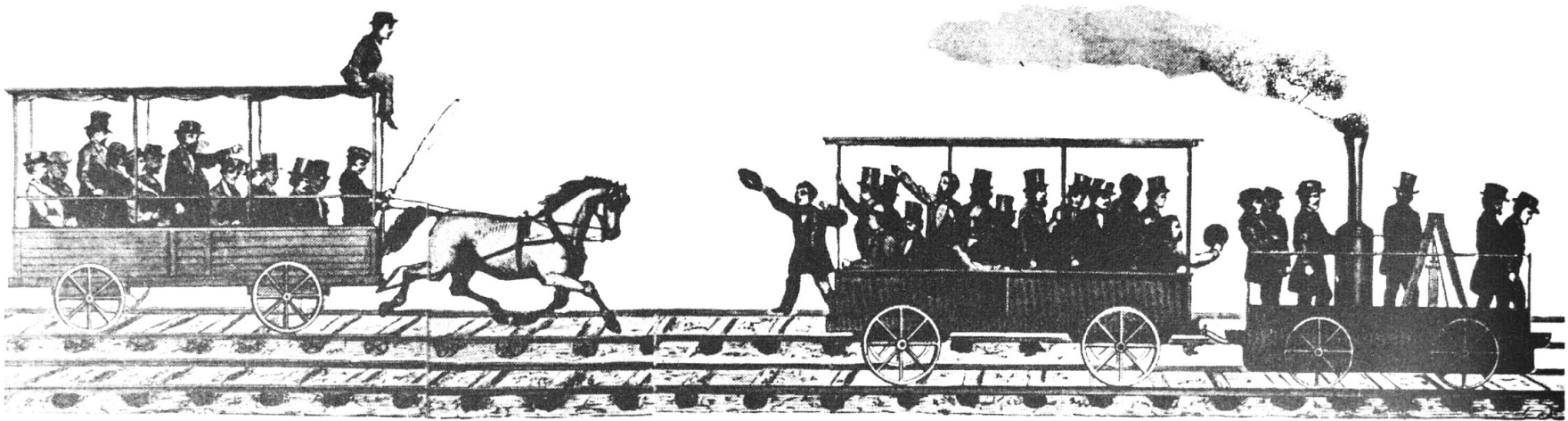
Robert Stephenson's **Northumbrian**
Liverpool & Manchester RY



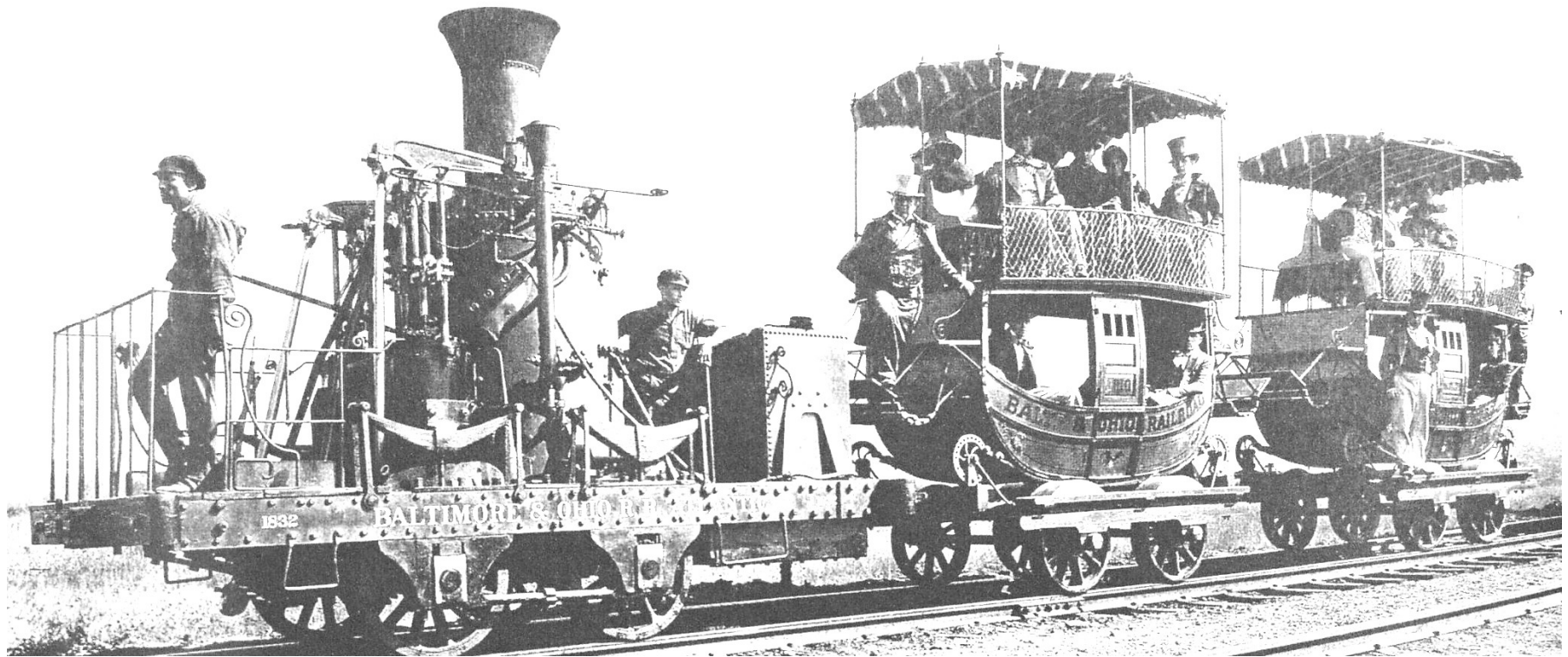
Robert Stephenson's **ROCKET**
won Rainhill trials completing all requirements



Best Friend of Charleston
First locomotive in America to pull a train.



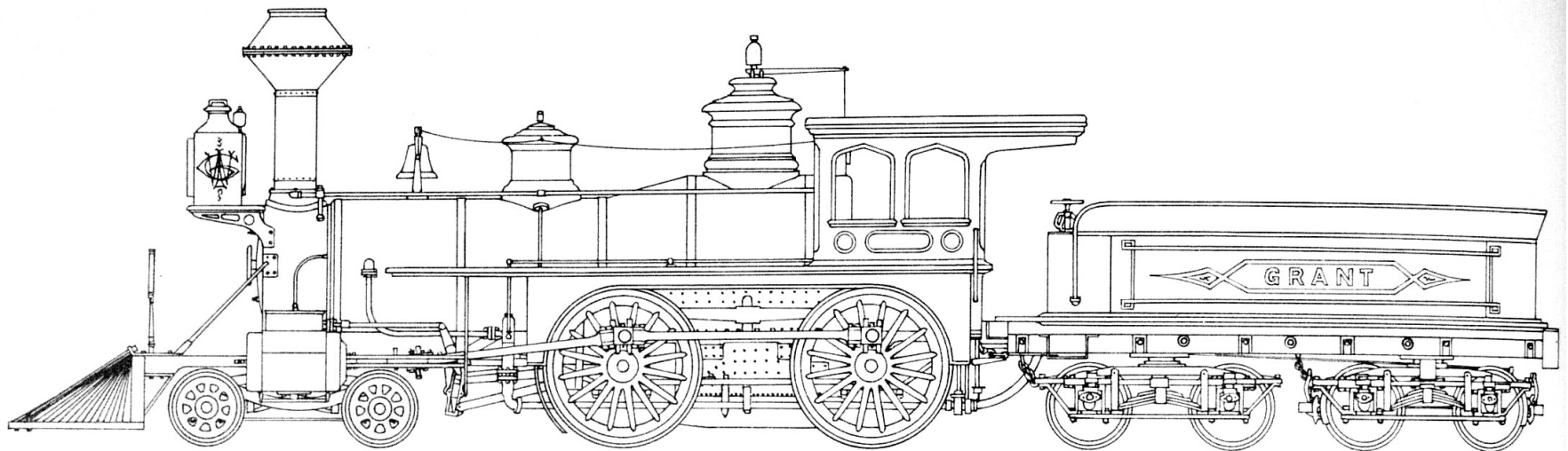
Peter Cooper's Tom Thumb (1hp.)
Raced a horse car – horse car won.
August 1830 – Baltimore and Ohio RR



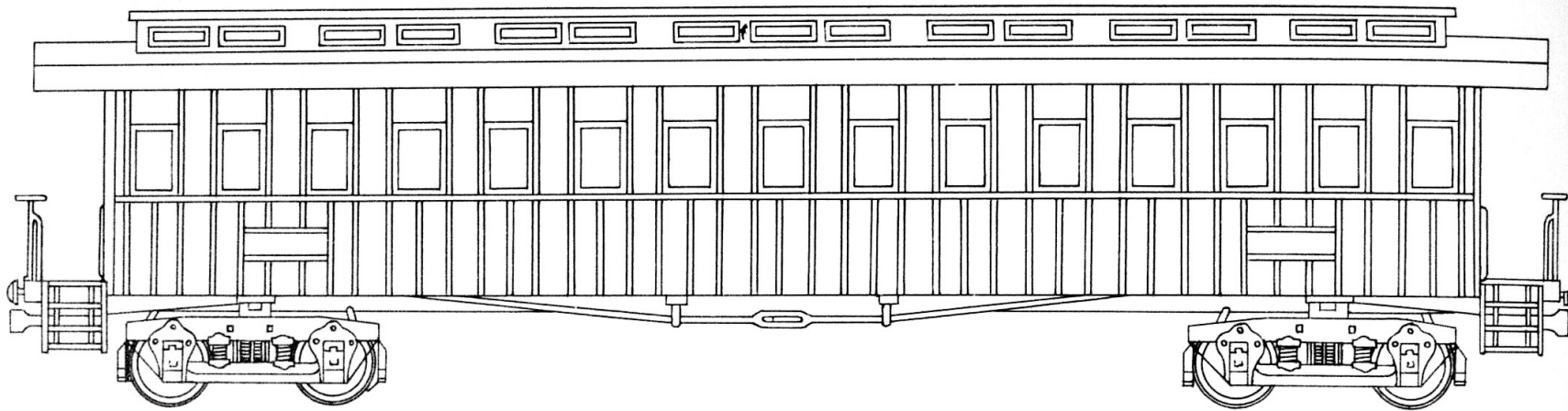
B & O Atlantic - 1832



Locomotives at Washington D.C., Civil War



American Type Locomotive 1873

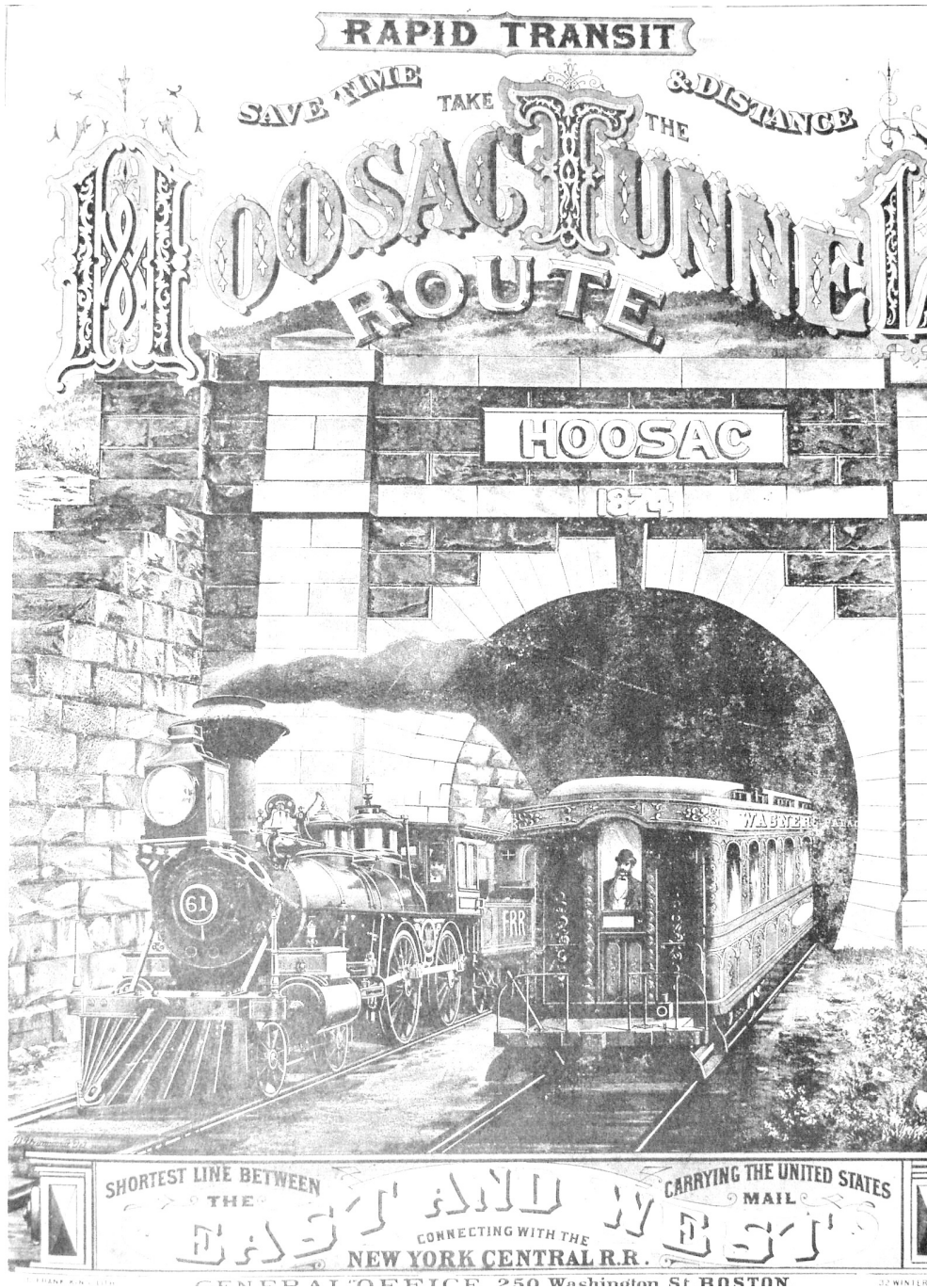


This 1865 American car was in general use on most railroads. It was 50 feet in length and weighed just under 16 tons.

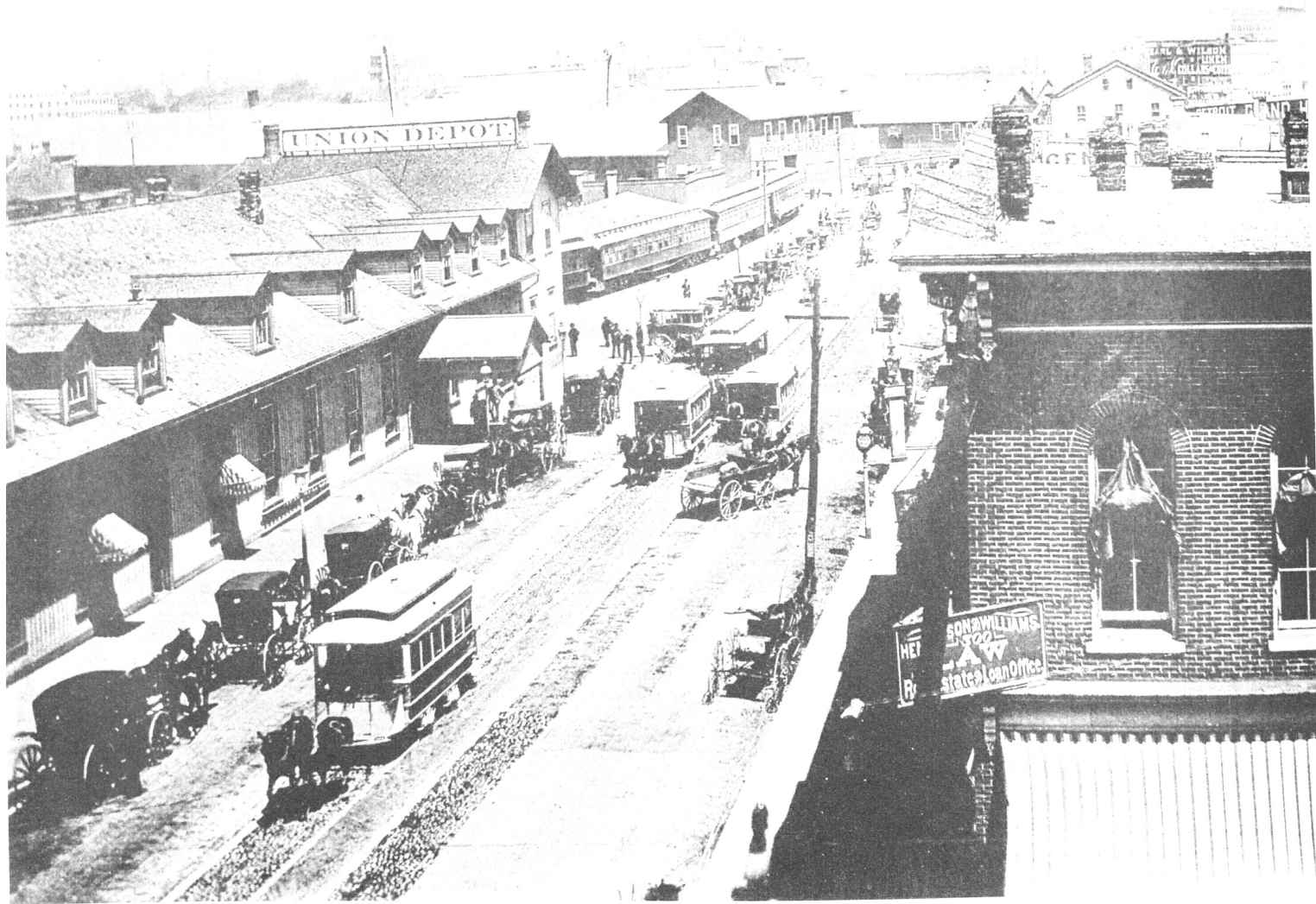
Typical Passenger Car 1865



First Transcontinental Railroad 1869
UP and CP link up at Promontory, Utah



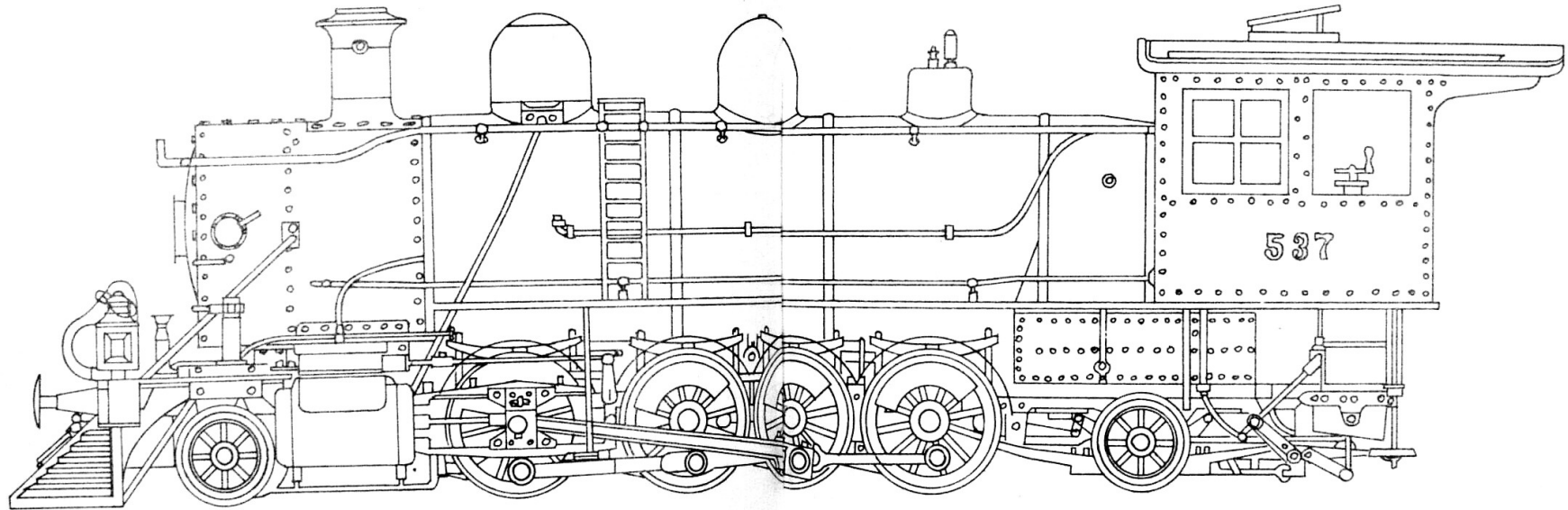
1873 advertising
flyer for New
York Central RR
passenger service



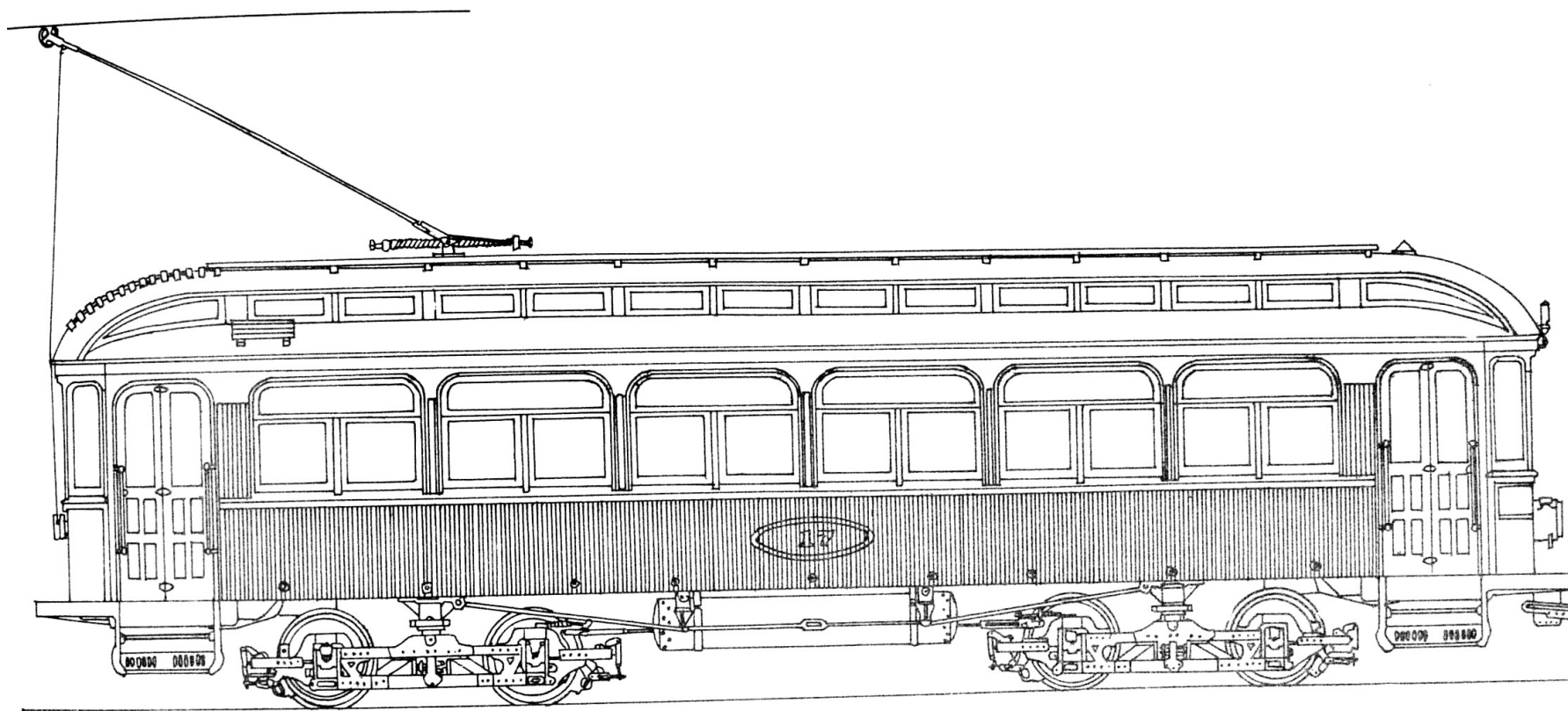
Milwaukee Union Depot – Post Civil War



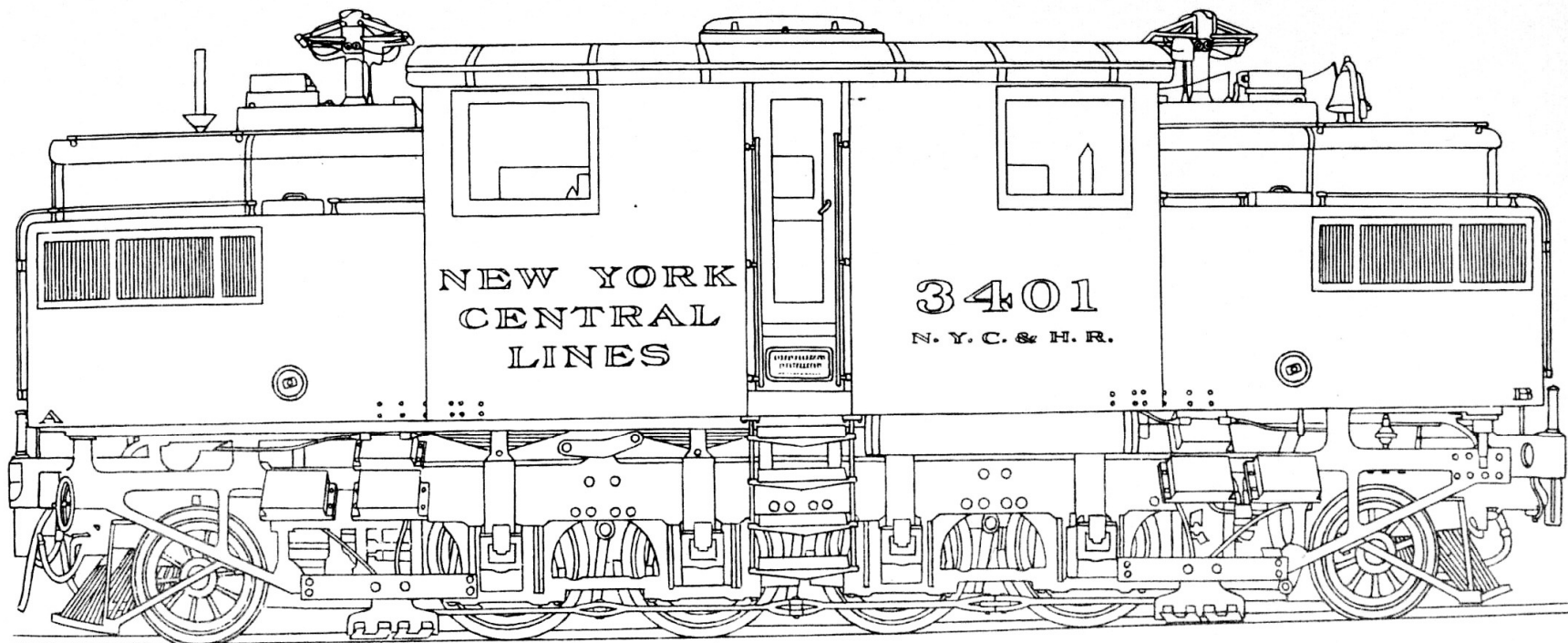
Really Quick Meal Stop



2-8-2 Heavy Freight Locomotive ~1900



Electric Interurban Car



Electric Locomotive



Cumbres & Toltec RR - Narrow Gauge
Typical Box Car



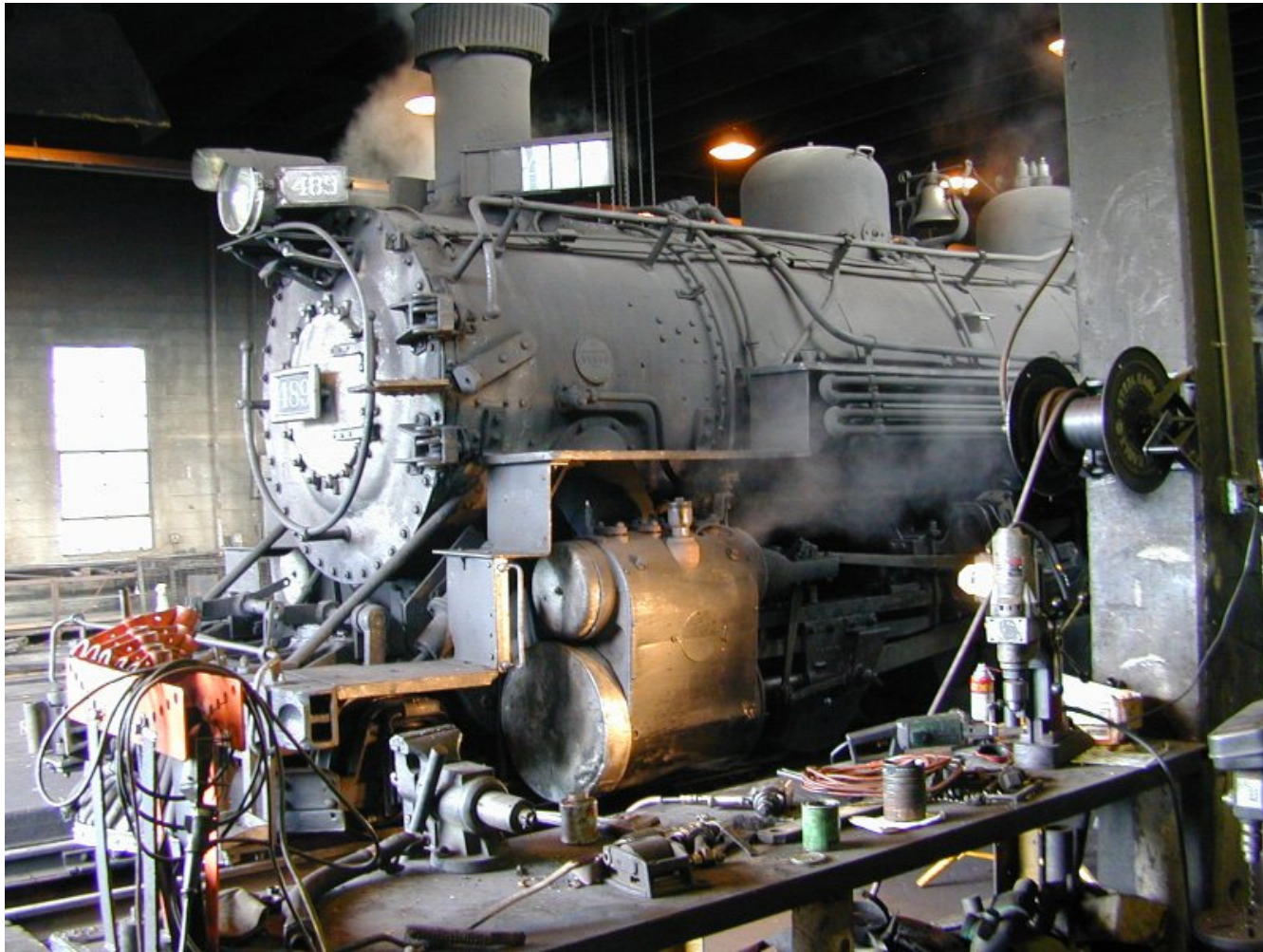
C&T Chama Station



C&T Storage Building & Engine House



Locomotive in Engine House



Just a Neat Picture



C&T Coaling Tower & Gondola Cars



C&T Water Tower



C&T Rotary Snow Plow



Lets Take a Train Ride



























D & R G W

5747

CAPY. 5000
LD LMT 5500
LT WT. 29100

ALA. 4 46

REBUILT 2 26

Rio Grande

CU. FT. 1510
LL. 26 FT. 4 IN.
LW. 7 FT. 3 IN.
LH. 6 FT. 1 1/2 IN.

APPL. A. 11-11-26
APCB



D&RGW
3524

NEW HOOF
ALA 5-25

D&RGW

D & R G W

FLIGHT SUGAR
AND BEAN
LOADING ONLY

3524

WHEEL
W/ BRAKE
C/W PLEER SHAFT
SINGLE POCKET W/ T GEAR
W/ TAIL BRAKE BEAM

KEEP
OFF

DONOT CLEAT DOOR

CAPACITY 100,000 LBS
LENGTH 35'-0" 25'-0" 25'-0"
WIDTH 8'-6" 7'-6" 7'-6"
HEIGHT 8'-6" 8'-0" 8'-0"
NO. OF AXLES 4 4 4
NO. OF WHEELS 8 8 8
NO. OF TIRERS 8 8 8
NO. OF BOLTS 8 8 8















DRHY

DRHY 1016

LD LMT 224700
LT WT 61300

DRHY





